

\$348,800 - 4215, 6 Merganser Drive W, Chestermere

MLS® #A2222355

\$348,800

2 Bedroom, 2.00 Bathroom, 700 sqft
Residential on 0.00 Acres

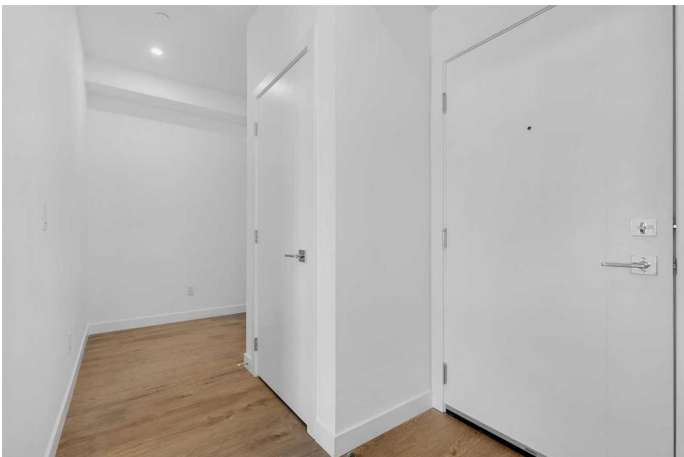
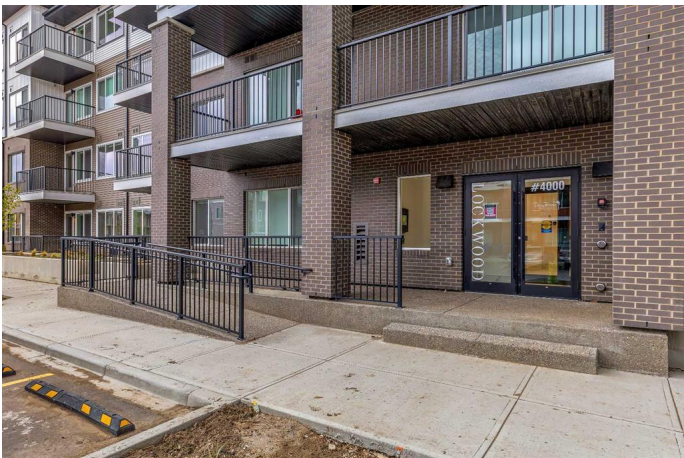
Chelsea_CH, Chestermere, Alberta

Discover modern living in this 2-bedroom, 2-bathroom gem on the second floor, spanning 700 sq. ft. Designed by an award-winning builder, this unit features energy-efficient design, sleek 9-foot ceilings, and expansive windows for natural light. Enjoy quartz countertops, contemporary cabinetry, and premium stainless steel appliances in the kitchen. The spacious layout includes luxury vinyl plank flooring, a stackable washer and dryer, and spa-inspired bathrooms with finely crafted vanities. Added perks: heated underground parking, security monitoring, and main-level bike storage room PLUS one titled underground heated parking stall. A stylish, low-maintenance home in a vibrant community!

Built in 2025

Essential Information

MLS® #	A2222355
Price	\$348,800
Bedrooms	2
Bathrooms	2.00
Full Baths	2
Square Footage	700
Acres	0.00
Year Built	2025
Type	Residential



Sub-Type	Apartment
Style	Single Level Unit
Status	Active

Community Information

Address	4215, 6 Merganser Drive W
Subdivision	Chelsea_CH
City	Chestermere
County	Chestermere
Province	Alberta
Postal Code	T1X 2Y2

Amenities

Amenities	Bicycle Storage, Parking, Secured Parking
Parking Spaces	1
Parking	Parkade, Stall, Underground

Interior

Interior Features	Quartz Counters, Recessed Lighting
Appliances	Dishwasher, Dryer, Electric Stove, Microwave Hood Fan, Refrigerator, Washer, Window Coverings
Heating	Baseboard
Cooling	None
# of Stories	4

Exterior

Exterior Features	Balcony, BBQ gas line
Roof	Membrane
Construction	Brick, Composite Siding, Wood Frame

Additional Information

Date Listed	May 20th, 2025
Days on Market	27
Zoning	M-2

Listing Details

Listing Office	RE/MAX Real Estate (Mountain View)
----------------	------------------------------------

Data is supplied by Pillar 9â„¢ MLSÂ® System. Pillar 9â„¢ is the owner of the copyright in its MLSÂ® System. Data is deemed reliable but is not guaranteed accurate by Pillar 9â„¢. The trademarks MLSÂ®, Multiple Listing ServiceÂ® and the associated logos are owned by The Canadian Real Estate Association (CREA) and identify the quality of services

provided by real estate professionals who are members of CREA. Used under license.