

\$409,000 - 705 Tavender Road Nw, Calgary

MLS® #A2210830

\$409,000

2 Bedroom, 1.00 Bathroom, 525 sqft

Residential on 0.09 Acres

Thornccliffe, Calgary, Alberta

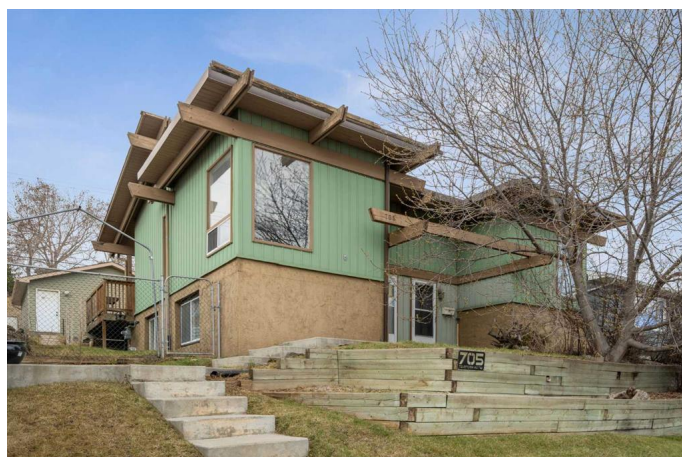
WELCOME TO 705 TAVENDER ROAD NW
â€” A PRIME OPPORTUNITY FOR THE
RIGHT BUYER TO BUILD IMMEDIATE
EQUITY. This charming bi-level is located on a
quiet street in the established community of
Thornccliffe and offers an ideal setup for
investors, renovators, or first-time buyers
looking to put their own stamp on a home.
With NO CONDO FEES and a generous lot
that BACKS ONTO GREEN SPACE, this is a
rare find at this price point. Inside, the layout
features hardwood and tile flooring on the
main, a vaulted kitchen ceiling with loads of
potential, and a fully finished basement with
two good-sized bedrooms. The PRIVATE
BACKYARD offers excellent space to relax,
garden, or eventually customize to your liking.
What truly sets this home apart is the
OVERSIZED DOUBLE GARAGE â€” nearly
24â€™ x 20â€™, fully insulated, drywalled,
powered with 220V, and heated with an
efficient electric heater. Whether you're a
hobbyist, car enthusiast, or need serious
workspace, this garage is a standout feature.
All of this in a location just minutes from
schools, shopping, and major routes â€” a
smart buy in today's market.

Built in 1972

Essential Information

MLS® # A2210830

Price \$409,000



Bedrooms	2
Bathrooms	1.00
Full Baths	1
Square Footage	525
Acres	0.09
Year Built	1972
Type	Residential
Sub-Type	Semi Detached
Style	Side by Side, Bi-Level
Status	Active

Community Information

Address	705 Tavender Road Nw
Subdivision	Thornccliffe
City	Calgary
County	Calgary
Province	Alberta
Postal Code	T2K 3M5

Amenities

Parking Spaces	2
Parking	Double Garage Detached, Insulated, Oversized, Heated Driveway
# of Garages	2

Interior

Interior Features	Built-in Features, Laminate Counters, Separate Entrance, Storage
Appliances	Dryer, Electric Range, Refrigerator, Washer
Heating	Forced Air
Cooling	None
Has Basement	Yes
Basement	Full, Partially Finished

Exterior

Exterior Features	Private Entrance, Private Yard
Lot Description	Back Yard, Lawn
Roof	Asphalt Shingle
Construction	Metal Siding, Wood Frame
Foundation	Poured Concrete

Additional Information

Date Listed	April 17th, 2025
Days on Market	14
Zoning	R-CG

Listing Details

Listing Office	RE/MAX iRealty Innovations
----------------	----------------------------

Data is supplied by Pillar 9â„¢ MLS® System. Pillar 9â„¢ is the owner of the copyright in its MLS® System. Data is deemed reliable but is not guaranteed accurate by Pillar 9â„¢. The trademarks MLS®, Multiple Listing Service® and the associated logos are owned by The Canadian Real Estate Association (CREA) and identify the quality of services provided by real estate professionals who are members of CREA. Used under license.